

# IMX Technologies

XYPEX REGLET  
WALL OVER FLOOR ELEVATOR PIT  
FOR USE WITH XYPEX ADMIXTURE

10 YEAR WATER TIGHT WARRANTY

REMOVE 3/4" x 1" BLOCK OUT

COMPLETELY WET REGLET AREA AND LET DRY  
JUST SO MOISTURE SHEEN DISAPPEARS.

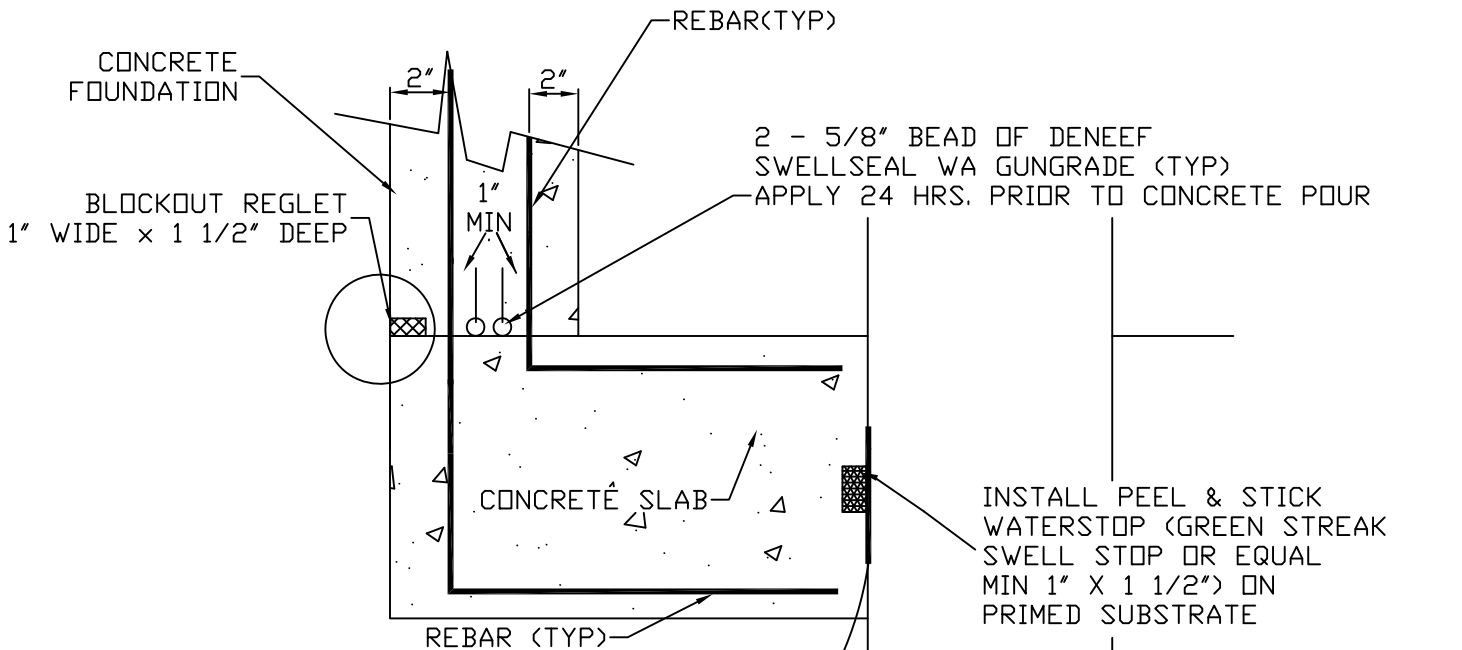
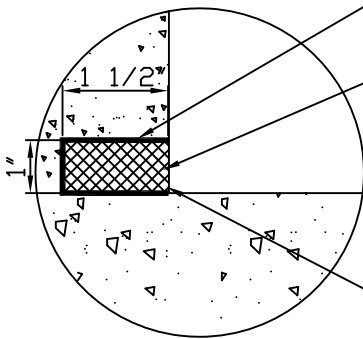
APPLY XYPEX CONCENTRATE SLURRY COAT  
(5-6 SF/LB) TO REGLET AREA AND LET SET  
UNTIL IT IS DRY TO TOUCH, BUT STILL MOIST GREEN

MIX XYPEX 80/20 MIX FOR DRY-PAC 6:1 (6 PARTS  
XYPEX 80/20 MIX WITH 1 PART WATER) BY VOLUME  
TO A LUMPY DRY CONSISTENCY.

HAMMER PACK TIGHTLY INTO REGLET AREA WITH A  
HARDWOOD 1x4 AND SMALL SLEDGE HAMMER.

AFTER INITIAL SET OF THE DRY-PAC MATERIAL, APPLY  
XYPEX GAMMA CURE TO THE DRY-PAC AREA AT A RATE OF  
850 SF PER MIXED GALLON. (MIX 3 PARTS WATER TO 1 PART  
XYPEX GAMMA CURE)

(XYPEX 80/20 MIX: THOROUGHLY DRYMIX 4 PARTS XYPEX  
PATCH N' PLUG WITH 1 PART XYPEX CONCENTRATE)



CMP-  
CLEAN OFF ALL DIRT & DEBRIS.  
SOLVENT WIPE THE AREA WHERE  
THE DENEFF SWELLSEAL IS TO  
BE APPLIED.  
STEEL CASING-  
CLEAN OFF ALL DIRT & DEBRIS.  
WIRE BRUSH OFF ALL RUST OXIDATION  
IN AREA WHERE THE DENEFF  
SWELLSEAL IS TO BE APPLIED.